

Health Overview and Scrutiny Panel

ADDITIONAL INFORMATION AND PRESENTATIONS

Thursday, 29th August, 2019
at 6.00 pm

ADDITIONAL INFORMATION RELATED TO THE LISTED
REPORTS

ADDITIONAL INFORMATION AND PRESENTATIONS

- NHS Continuing Healthcare supplemental information

DIRECTOR, LEGAL AND GOVERNANCE

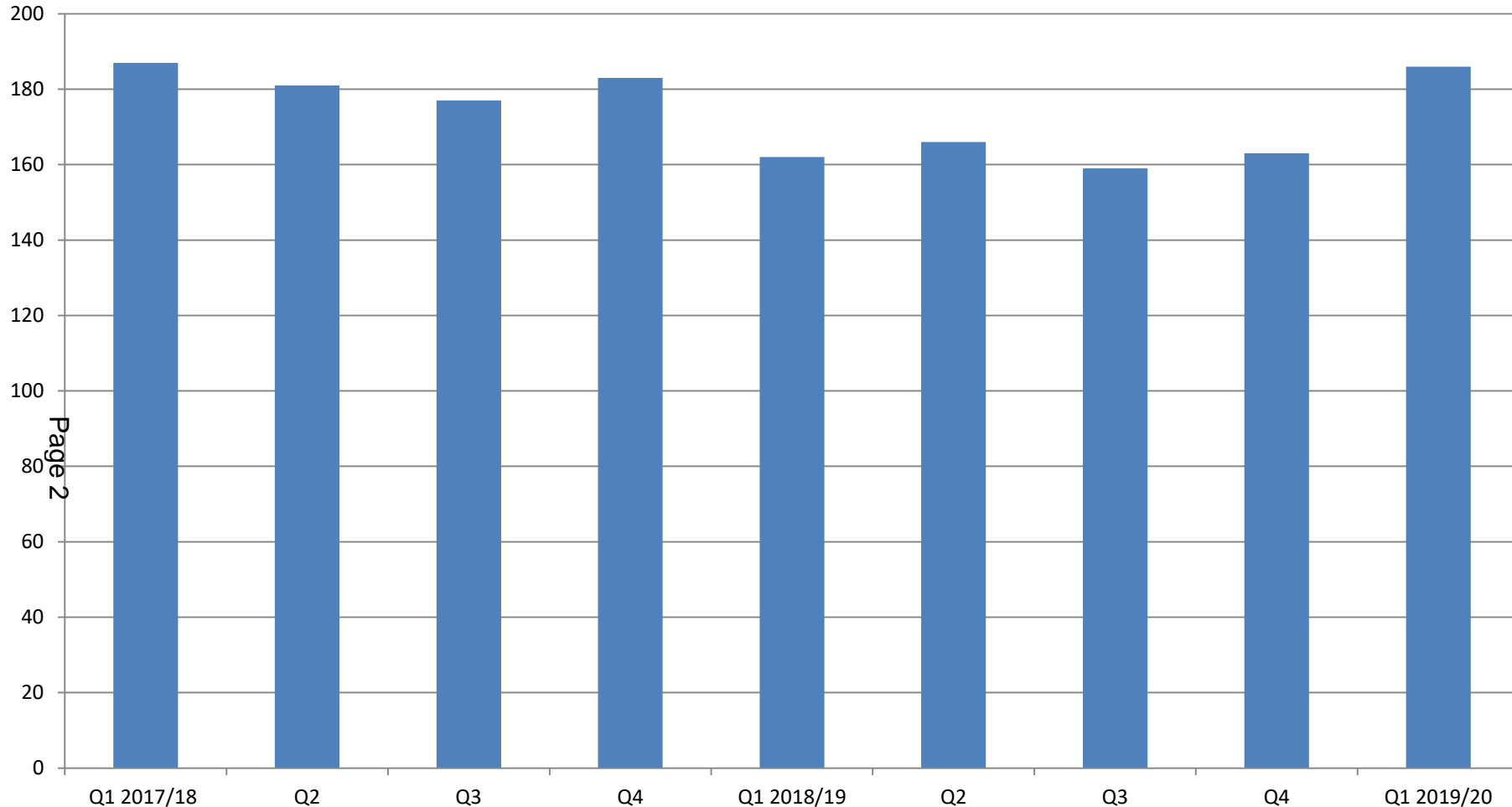


Southampton City
Clinical Commissioning Group

NHS Continuing Healthcare

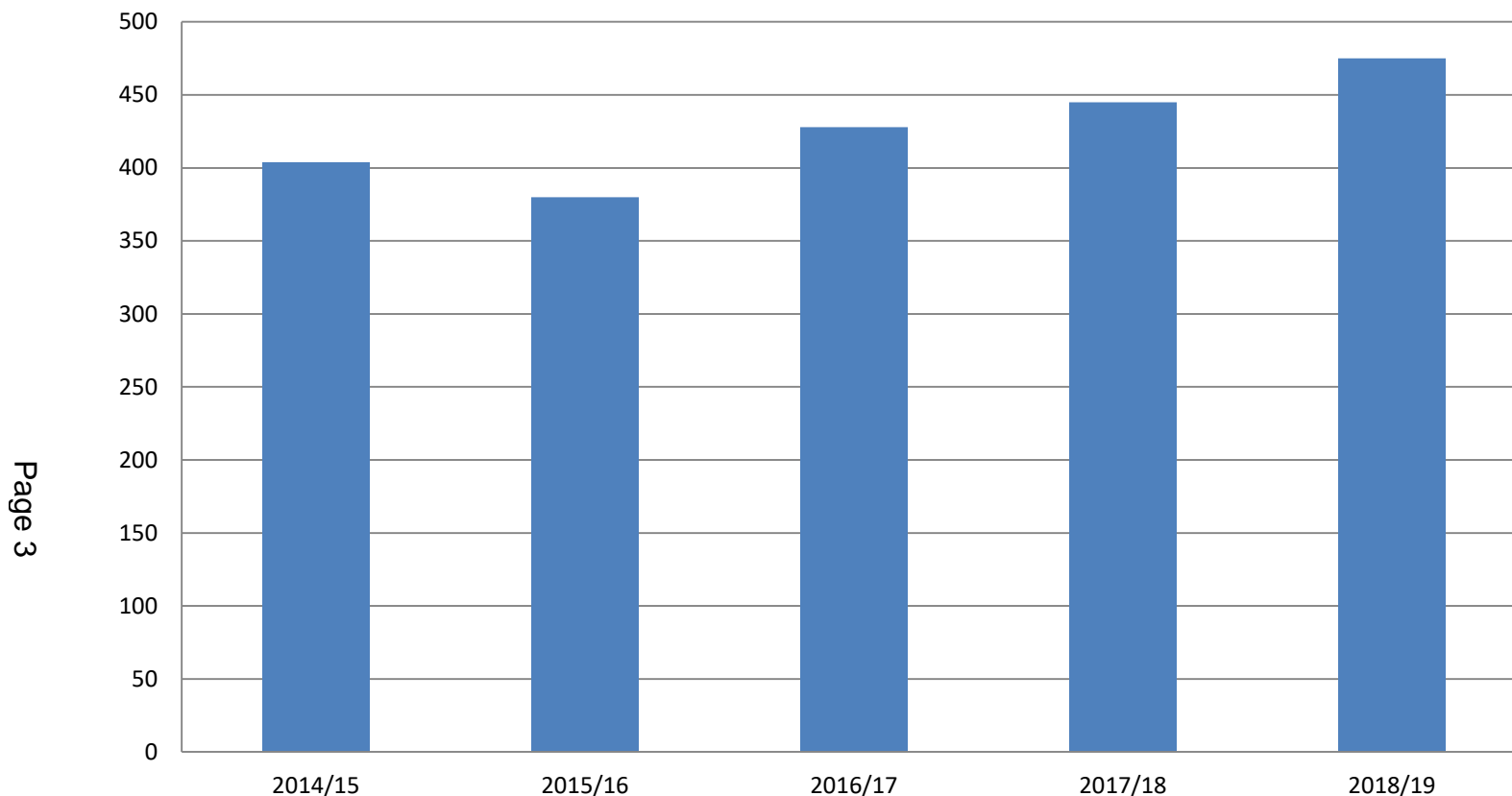
Correct as of 28th August 2019

Southampton - Number CHC eligible at the end of the Quarter Q1 2017/18 - Q1 2019/20



This chart shows the number of CHC eligible clients by quarter, the numbers fluctuate between 159 and 187. This includes long term care and end of life care - known as Fast Track.

Total Number of clients eligible for CHC in year since 2014/15 in Southampton



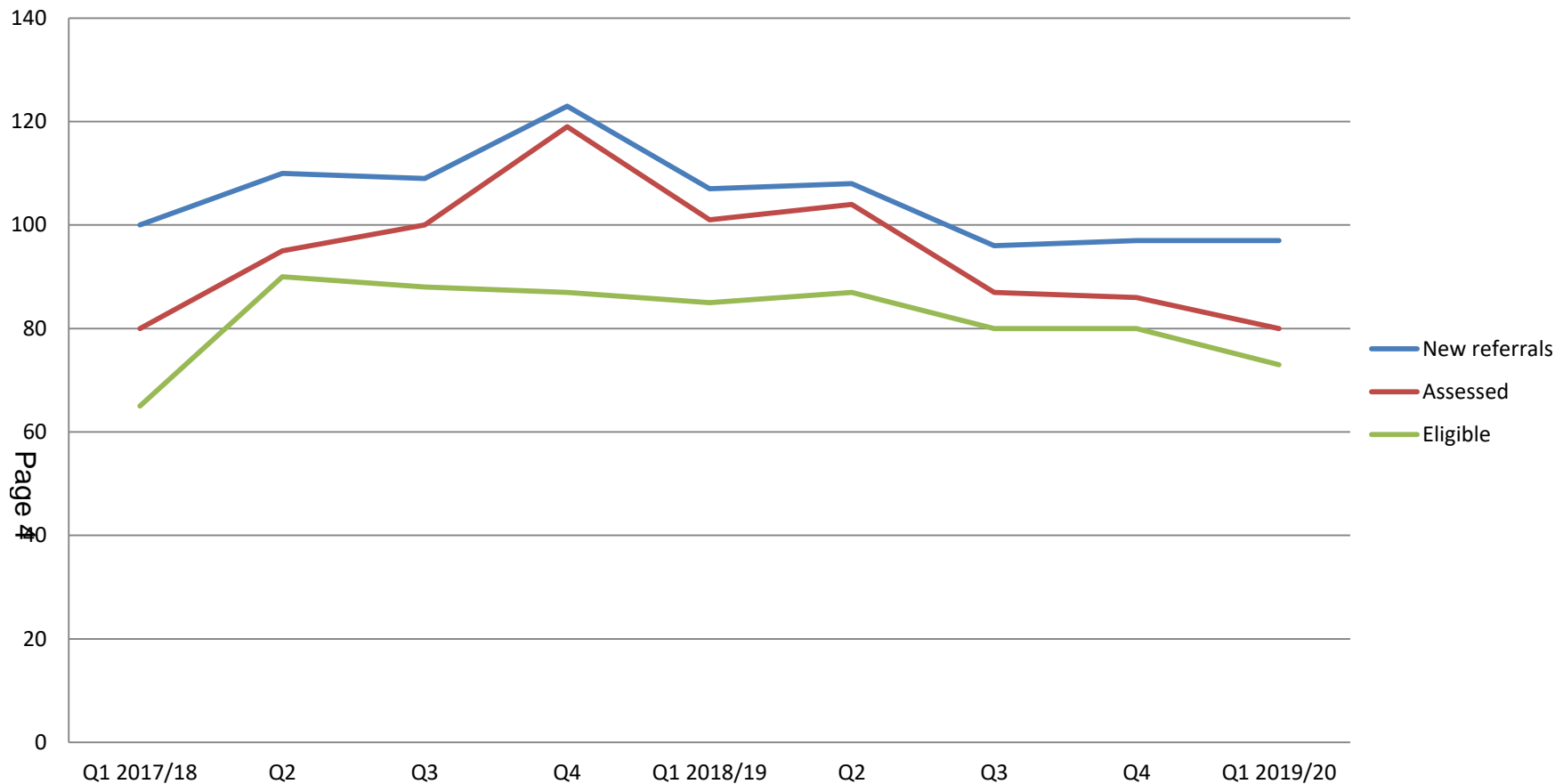
Page 3

Numbers eligible for CHC in the last three years has increased. Indications from Q1 2019/20 suggest that pattern is continuing for 2019/20

Referral numbers for CHC in Southampton are lower than other areas with the majority of CHC referrals for Southampton are generated via the hospital.

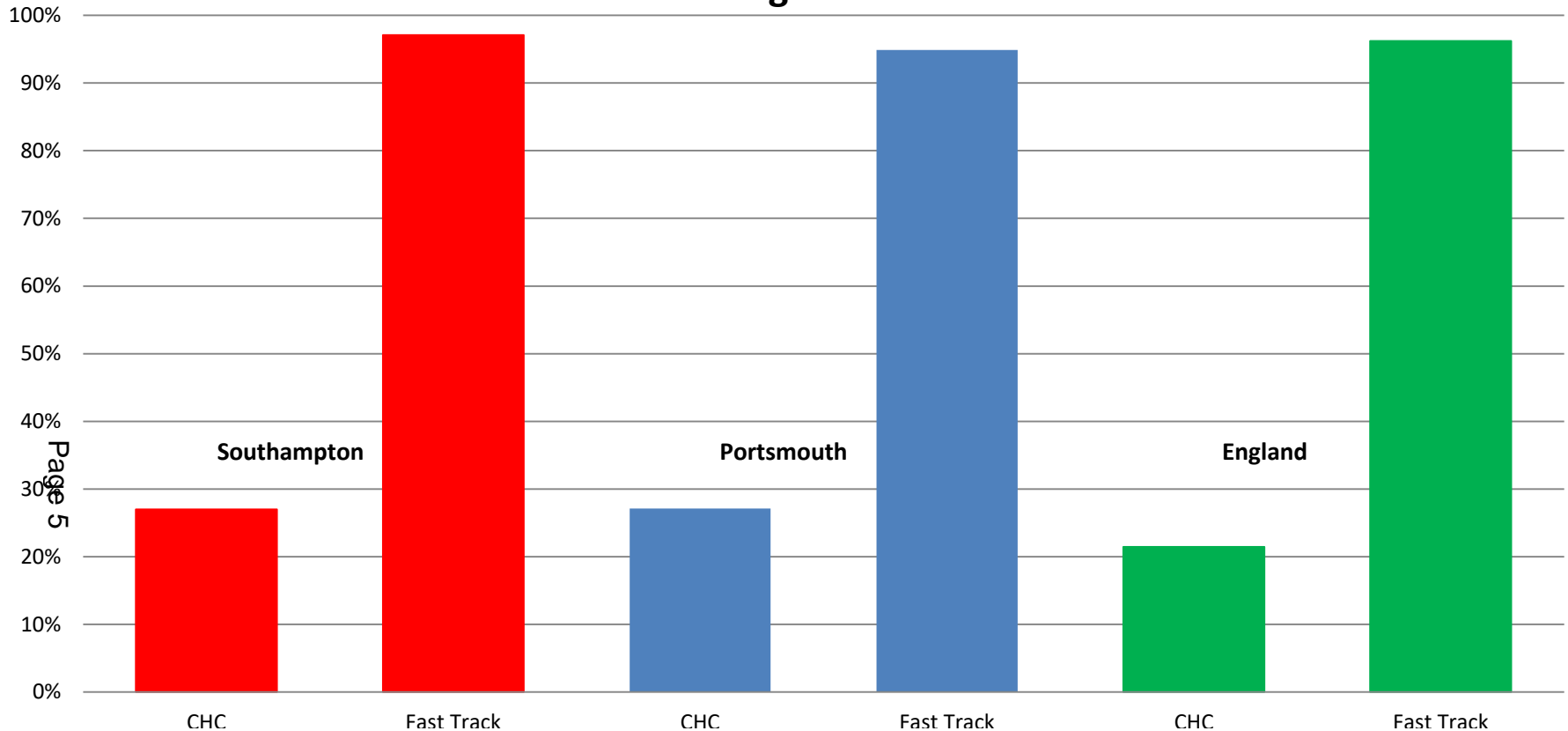
The CCG is working proactively with social workers to ensure they are clear when to refer for CHC and work is planned to support district nurses and other community health and care practitioners to ensure they understand the processes and criteria.

Southampton - numbers referred, assessed and eligible for CHC by quarter



This chart demonstrates that over the last two years the CHC referrals that convert into assessments and then to CHC funding has remained stable and in the last 9 months more people who are assessed are found to be eligible. The decision about eligibility is made by the MDT and not the CCG. The CCG ratify the decision via a panel when needed (borderline cases) which is chaired by an independent chair and has a social care decision maker present. There is a difference in the number of new referrals and the number assessed as we are required to record all initial indications of a referral which includes cases where we may have more than one referral for the same individual or we may have incorrect or missing information. This can include referrals made to the wrong CCG or missing consent when we cannot legally proceed with the assessment until that is obtained.

CHC Average conversion rate Q1 2017/18 to Q1 2019/20 - Referral to Eligible



This chart demonstrates that the conversion rate from referral to eligible for CHC is very similar to Portsmouth (statistical comparator) and to the England average. Indicating that our use of the national criteria for decision making is similar to others and not an outlier

Appeals Against Funding Decisions

Since April 2018 Southampton City CCG has had

- 9 local appeals submitted by families or individuals
- 6 have been to panel and closed to the local resolution process
- No appeals at local resolution level resulted in a decision being overturned
- 3 remain in the local resolution process. Of these 1 is being actively progressed and 2 intentions to appeal have been lodged but are awaiting family decision as whether to progress
- 2 cases are waiting to be heard at Independent Review Panel (IRP) led by NHS England. We are not routinely told by NHS England when they receive an appeal only when they want us to send them the file.
- Since April 2018 we have had no prospective (current) cases at IRP. We have had two prospective cases overturned; one was 2017 and one was prior to 2014. For retrospective and prospective cases, IRP rarely overturns our decision making. (Retrospective claims are predominantly made by families relating to a deceased individual)

Individual Funded Packages of Care

Area of Funding	Annual Budget (£) 2019/20
CHC adult fully funded care	12,942,149
CHC Adult fully funded personal health budgets	1,113,435
Adult Joint Funded Packages of care	2,899,644
Adult Joint Funded Personal Health Budgets	133,276
Funded Nursing Care	3,332,245
Section 117 - Learning Disabilities	268,597
Mental Health	509,210
Section 117 - Mental Health	2,925,388
Community Services	4,187
Specialist Rehab / ECR	284,090
Grand Total	24,412,221



Note – This excludes Children’s funding (under 18’s)

Page 7

Predicted CHC spend for 2019 is circa £14.1M (numbers in red above)

Overall CCG Budget 2019/20 for Individual Packages of Care proportion split by client group (includes children). Based on a total budget of just under £27.7M

Page 8

